

An aerial photograph of a beach with several boats in the water. The water is a mix of light blue and green, and the beach is sandy. There are about six boats of various sizes scattered across the water. The text is overlaid on the right side of the image.

# Waipahu High School Ohana of Excellence Academy







01

# ABOUT OEA



---

# OHANA OF EXCELLENCE ACADEMY

## ***Vision:***

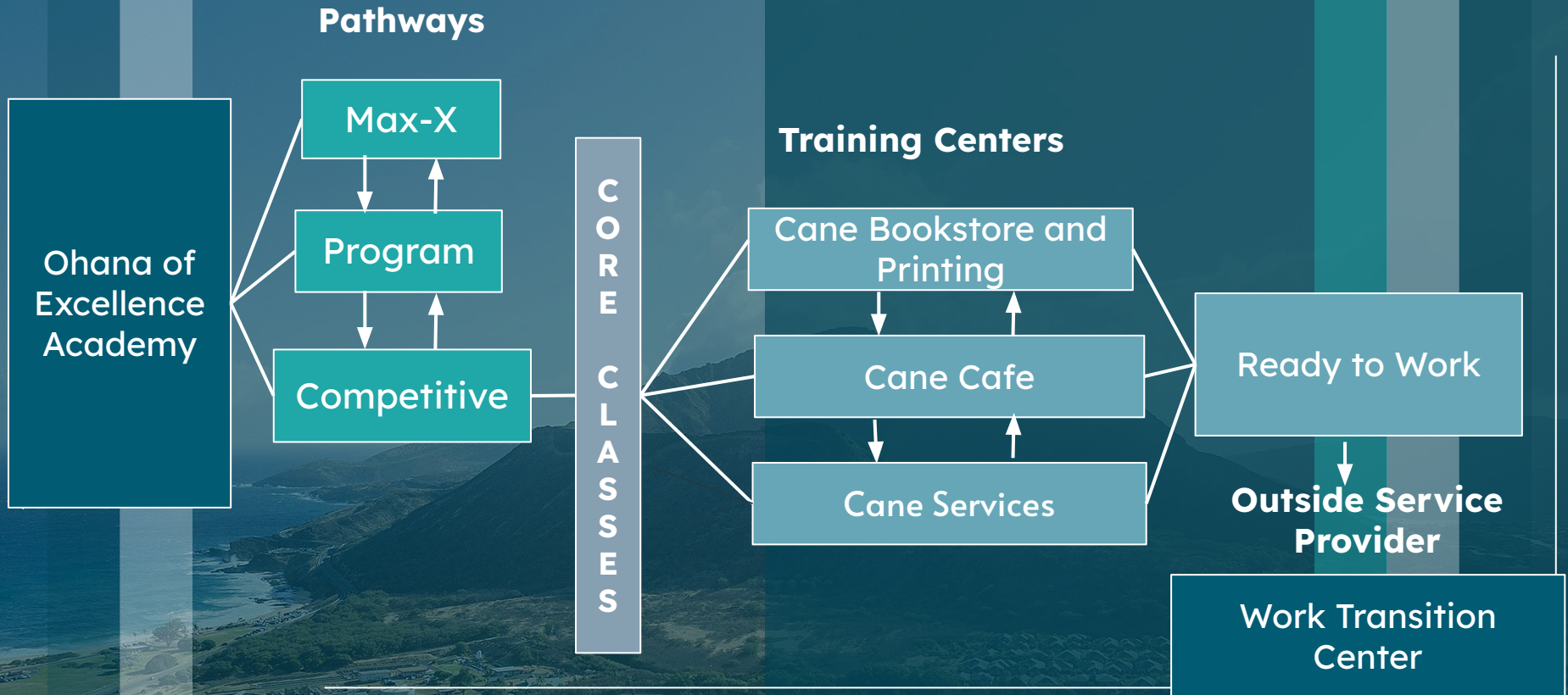
Support all students in reaching their highest potential. Our academy will prepare students for entry level positions in various occupational fields or post high school programs.

## ***Mission:***

In partnership with all stakeholders, provide innovative hands on learning opportunities for all students to cultivate independence and self-advocacy.

---

# Academy Framework







02

# OUR JOURNEY





# MAX-X PATHWAY



# MAX-X



RECYCLING



GARDENING



COOKING



# Academy Framework

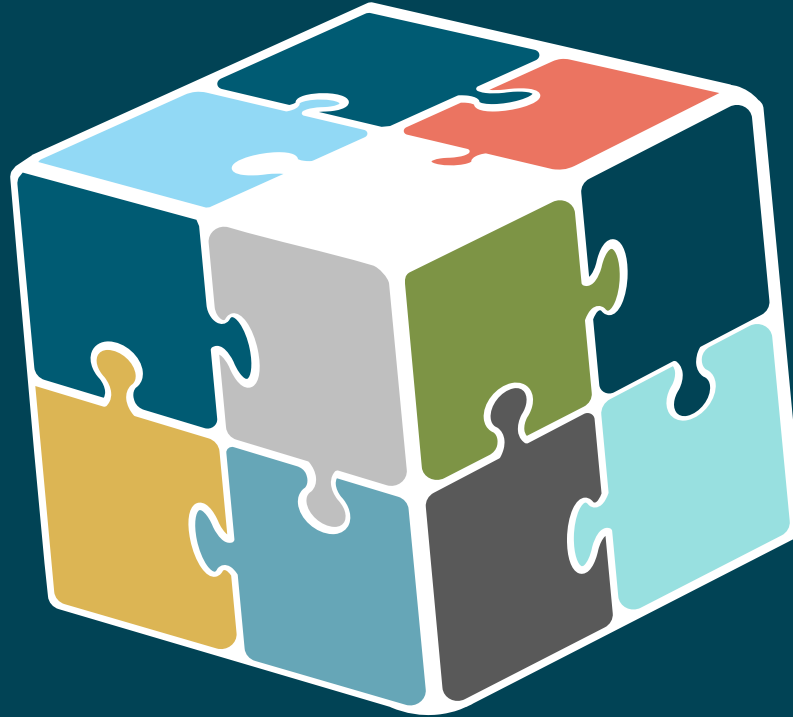
## Pathways







**INDIVIDUAL  
INSTRUCTION**



**A MODIFIED  
CURRICULUM**



**REAL WORLD  
EXPERIENCES**

**COMMUNITY  
BASED  
INSTRUCTION**



**PEER  
INTERACTIONS**

**CAREER  
READINESS**





# PROGRAM PATHWAY

## Charcuterie





# PROGRAM PATHWAY

## Ohana Sweet Treats





# PROGRAM PATHWAY

## Newspaper Delivery



# PROGRAM PATHWAY-Aloha Fruit Friday





# PROGRAM PATHWAY-Tie-Dye



# PROGRAM PATHWAY-Car Wash





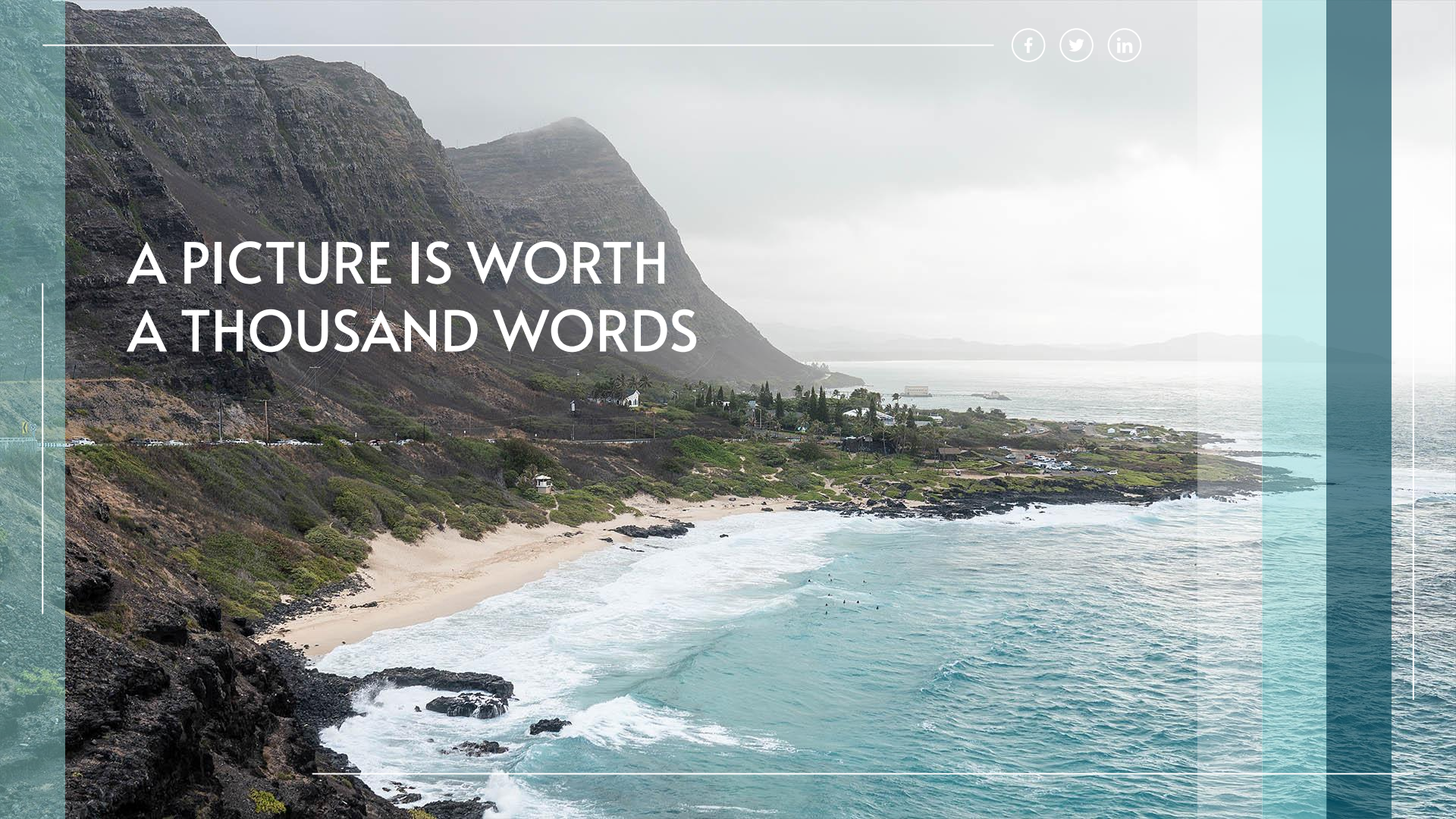


“Being independent  
means living one's own  
story everyday.”



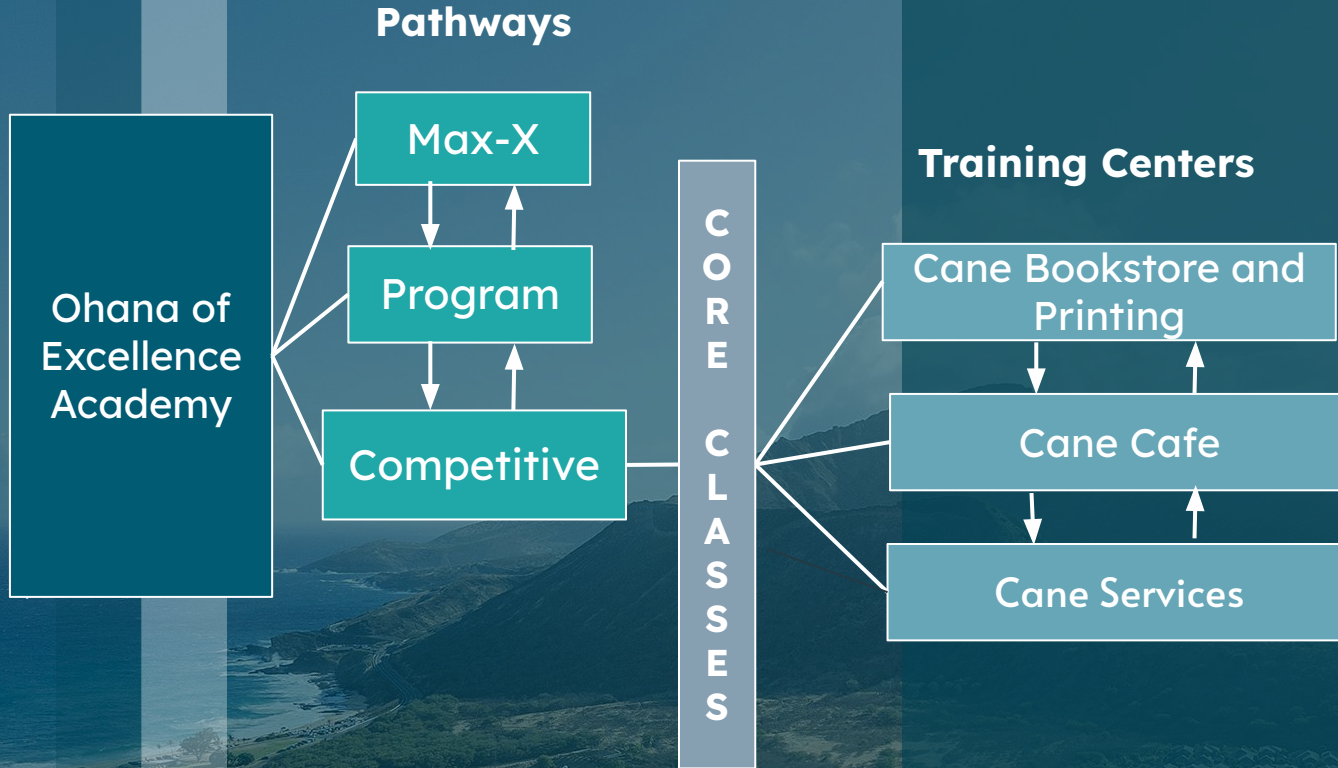


A PICTURE IS WORTH  
A THOUSAND WORDS





# Academy Framework



# COMPETITIVE -TRAINING CENTERS








CANE  
*cafe*



# COMPETITIVE PATHWAY-Cane Cafe





 CANE  
services



# COMPETITIVE PATHWAY-Maintenance





# COMPETITIVE PATHWAY-Bookstore & Printing





# WBL Alignment

## Pathways

Max-X

Program

## Cane Training Centers

Recycling

Cooking

Planting

Car Wash

Tie Dye Shirts

Planting

Aloha Fruit Fridays

Newspaper Delivery

Chacuterie

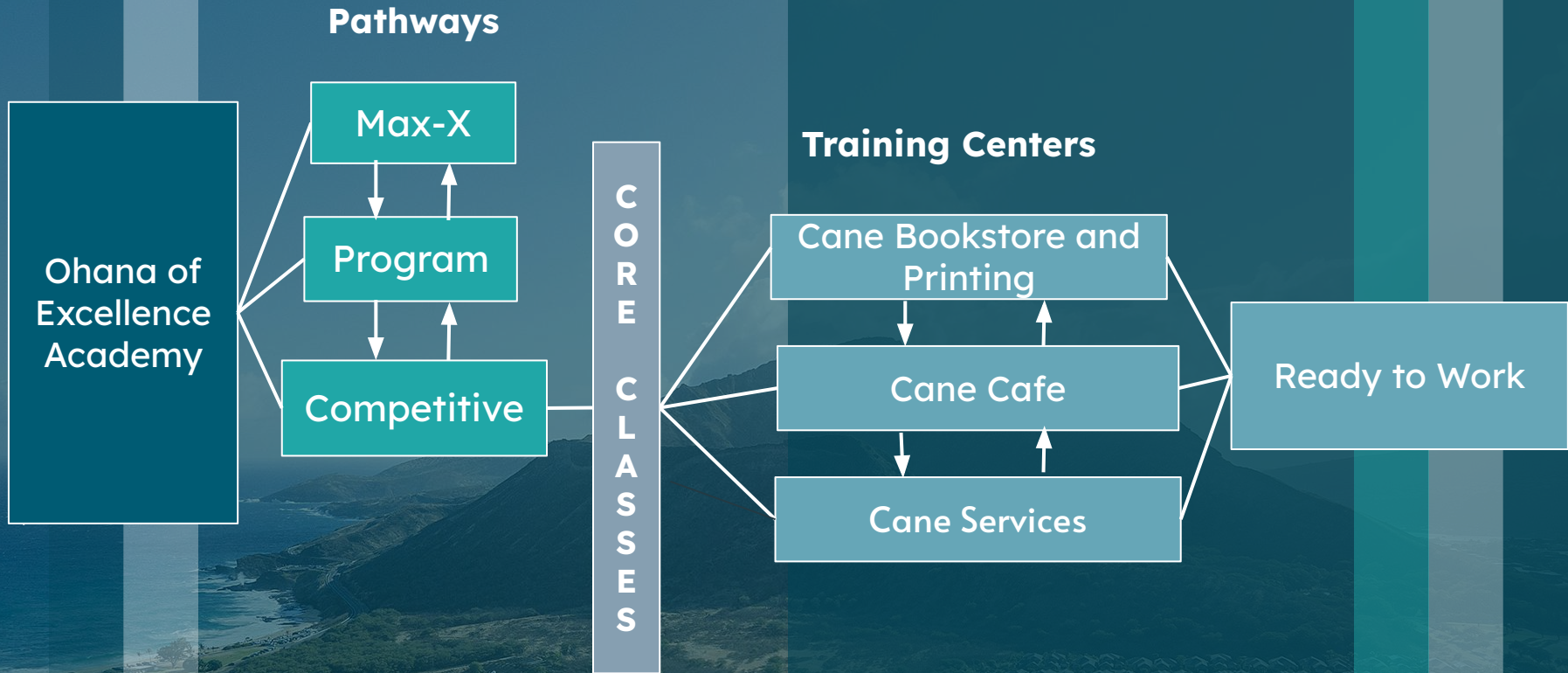
Cane Bookstore and  
Printing

Cane Cafe

Cane Services



# Academy Framework



# READY TO WORK

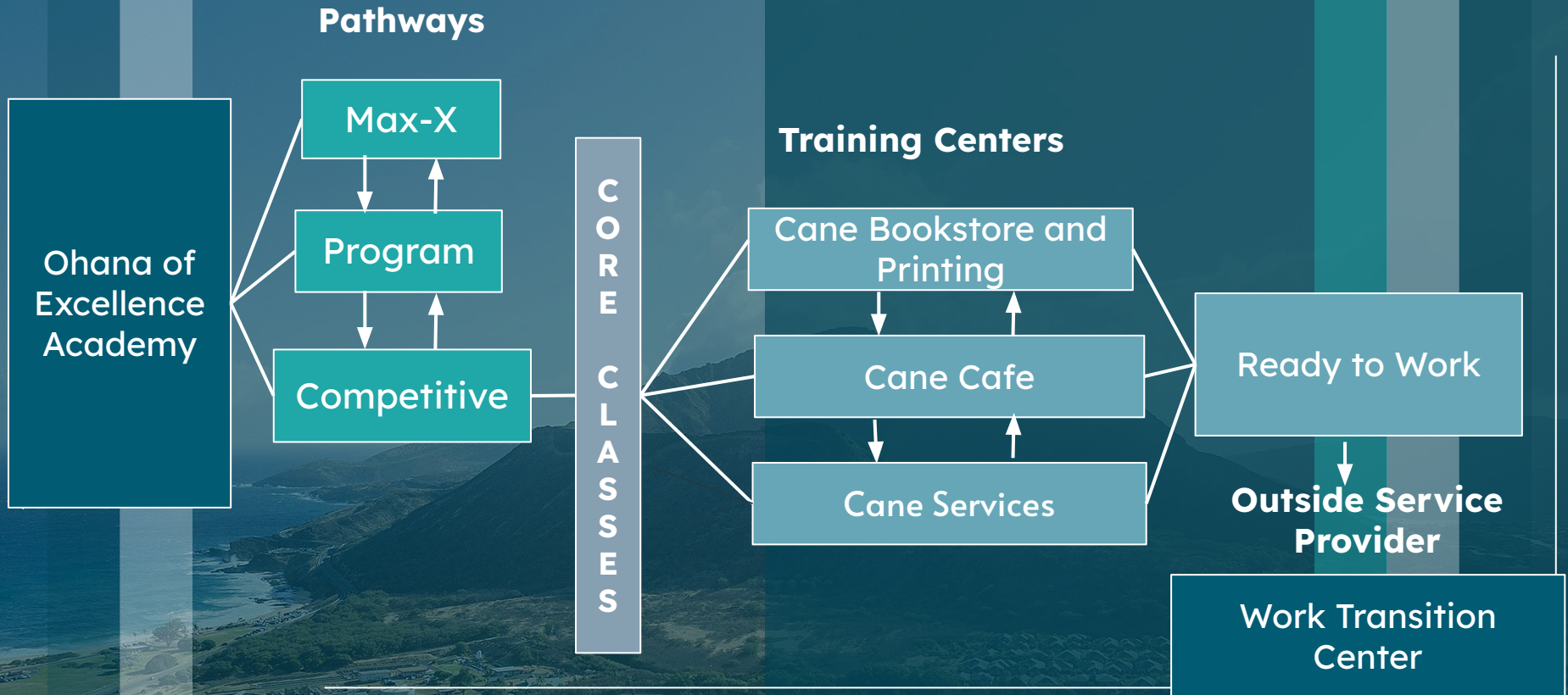




# READY TO WORK



# Academy Framework





# WORKFORCE TRANSITION CENTER

03



# WORKFORCE TRANSITION CENTER (WTC)

- Introduction
- Purpose/Curriculum
- Research & Development
  - Institute for Educational Leadership, Policy Brief February 2018, Preparing Transition-Age Youth with Disabilities for Work: What School Leaders Need to Know About the New Legal Landscape
  - Department of Labor. “What Works in Job Training: A Synthesis of the Evidence”
  - The Council for Exceptional Children, Vol. 66, No.4, pp.509-529, Improving Graduation and Employment Possibilities for Students with Disabilities: Predictive Factors and Student Perspectives



---

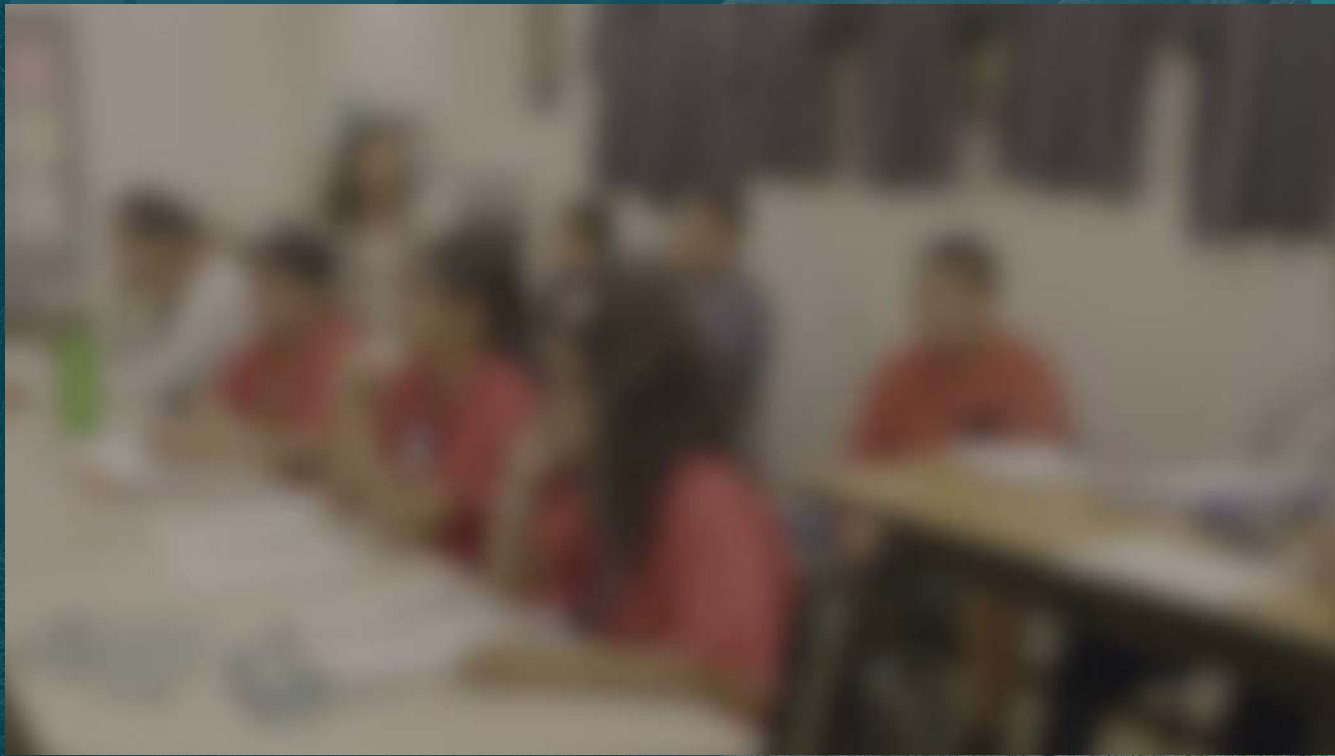
# WORKFORCE TRANSITION CENTER (WTC)

- Partnerships
    - Waipahu High School
    - Community Businesses
  - Outcomes
    - Innovate
    - Impact
    - Inspire
- 



---

# WORKFORCE TRANSITION CENTER (WTC)





VISIT OUR WEBSITE!



WATCH OUR VIDEO!



The image features a tropical beach scene with numerous palm trees in the foreground and a vast ocean in the background. The water transitions from a shallow, light green near the shore to a deeper blue further out. A teal gradient is applied to the left and right sides of the image, and a white horizontal line is positioned above the text. The text "THANK YOU!" is centered in a large, white, sans-serif font.

THANK YOU!